

ESA DINGHY

first start

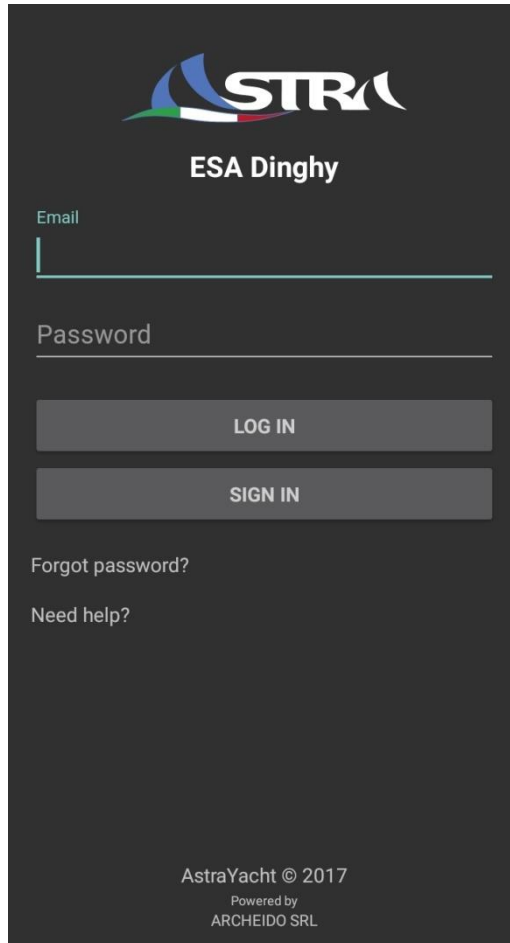
When you receive an ESA Dinghy from Astra Yacht srl there are two passages you have to do before using the CPU.

1. SET DINGHY OWNER

2. SET APN SIM

Android App Esa Dinghy – First start

First start App Android Esa Dinghy



STRA
ESA Dinghy

Email

Password

LOG IN

SIGN IN

Forgot password?

Need help?

AstraYacht © 2017
Powered by
ARCHEIDO SRL

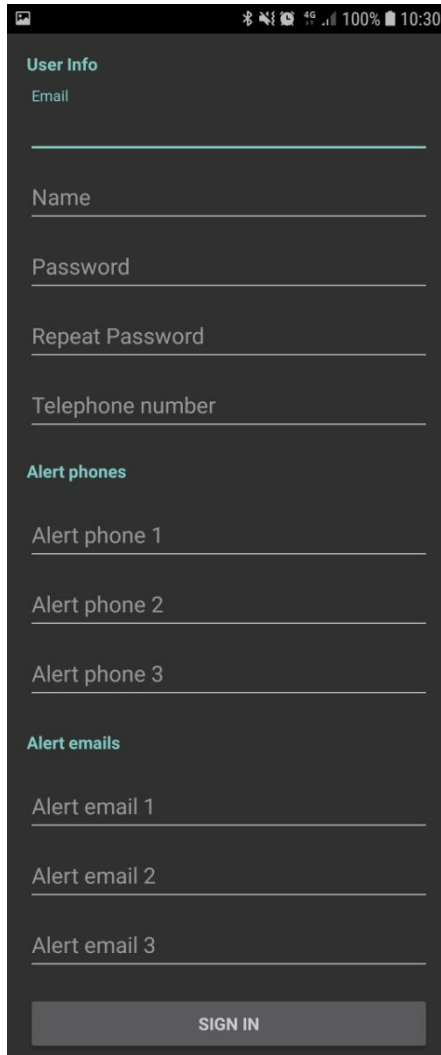
When first started, the App will appear as in the 'Login Page' figure. If it is your first access, and you still need to register, click on the 'Sign In' button and follow the instructions on the following pages.

Otherwise, if you have already registered and already have an active account, enter your Email and Password and click on the 'Log In' button.

To continue browsing the manual, continue directly to the 'First Power On' paragraph or to the 'Instructions for Use' paragraph.

Fig. Log In page

User Registration



The screenshot shows a mobile application interface for user registration. At the top, there is a status bar with icons for signal strength, Wi-Fi, 4G, 100% battery, and the time 10:30. Below the status bar, the title "User Info" is displayed. The form consists of several input fields: "Email", "Name", "Password", "Repeat Password", and "Telephone number". Below these fields, there are three sections for alert contacts: "Alert phones" with three fields labeled "Alert phone 1", "Alert phone 2", and "Alert phone 3"; and "Alert emails" with three fields labeled "Alert email 1", "Alert email 2", and "Alert email 3". At the bottom of the form, there is a grey button labeled "SIGN IN".

Registration allows you to use the App with its full functionality: fill in the empty fields with your personal information.

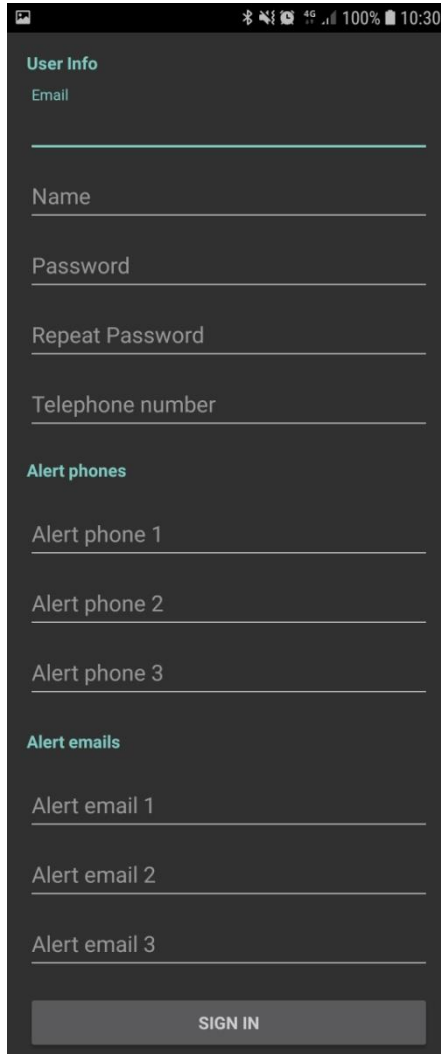
Email:

Indicate the email to which data useful for user registration will be sent.

Following registration, an email will be sent to this address for validation of the registration.

Validation email could take few minutes to be sent (usually less than 5 minutes)

User Registration



The screenshot shows a mobile application interface for user registration. At the top, there is a status bar with icons for Bluetooth, signal strength, 4G, 100% battery, and the time 10:30. Below the status bar, the title "User Info" is displayed in a light blue font. The form consists of several input fields, each with a light blue label and a white underline: "Email", "Name", "Password", "Repeat Password", and "Telephone number". Below these fields, there are two sections: "Alert phones" and "Alert emails". The "Alert phones" section contains three input fields labeled "Alert phone 1", "Alert phone 2", and "Alert phone 3". The "Alert emails" section contains three input fields labeled "Alert email 1", "Alert email 2", and "Alert email 3". At the bottom of the form, there is a grey button with the text "SIGN IN" in white capital letters.

Name, Password, Repeat password:

To create an account, you need to identify yourself with a name of your choice; Choose and repeat (for confirmation) a password to access your Esa Dinghy account

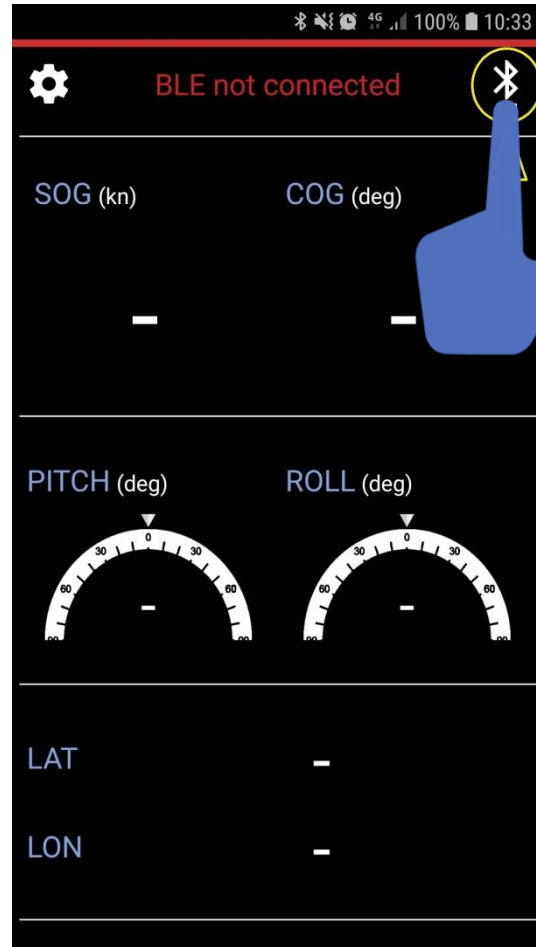
Telephone number:

In the 'Telephone number' field, enter the telephone number on which information relating to the use of Esa Dinghy will be sent. Remember to add the 'state prefix' before the telephone number (i.e. for Italy insert: +39)

Alert phones, Alert Email:

It is possible to enter up to three telephone numbers and three emails to which alarm messages will be sent, due, for example, to the overturning of the boat.

Smartphone association – ESA Dinghy



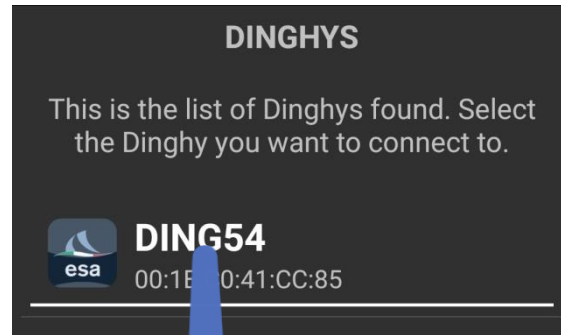
The first time you turn on an ESA Dinghy device, you will need to perform some initialization operations, which will be illustrated later.

These settings will be made through the ESA Dinghy App installed on the Android smartphone: the application will let communicate the smartphone with ESA Dinghy via Bluetooth connection. During this operation it is necessary to activate the GPS position on your smartphone.

The first operation to be performed is to pair the Dinghy device with the smartphone you are using: this operation will be carried out directly via the Esa Dinghy App, and not from the system settings of the smartphone. At startup, the App will be asked to start Bluetooth on the smartphone if it is not already active. Once Bluetooth is activated, a screen similar to the one shown here will appear: click on the icon circled here in yellow.



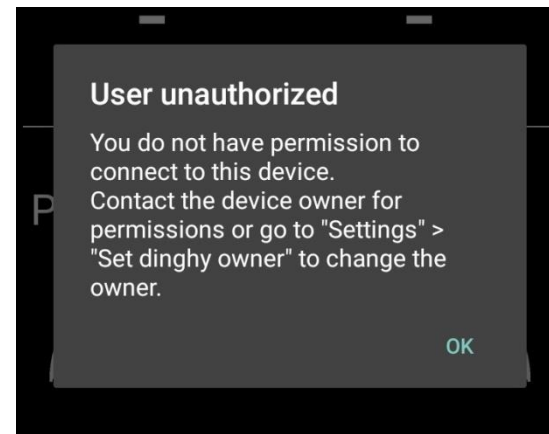
Smartphone association – ESA Dinghy



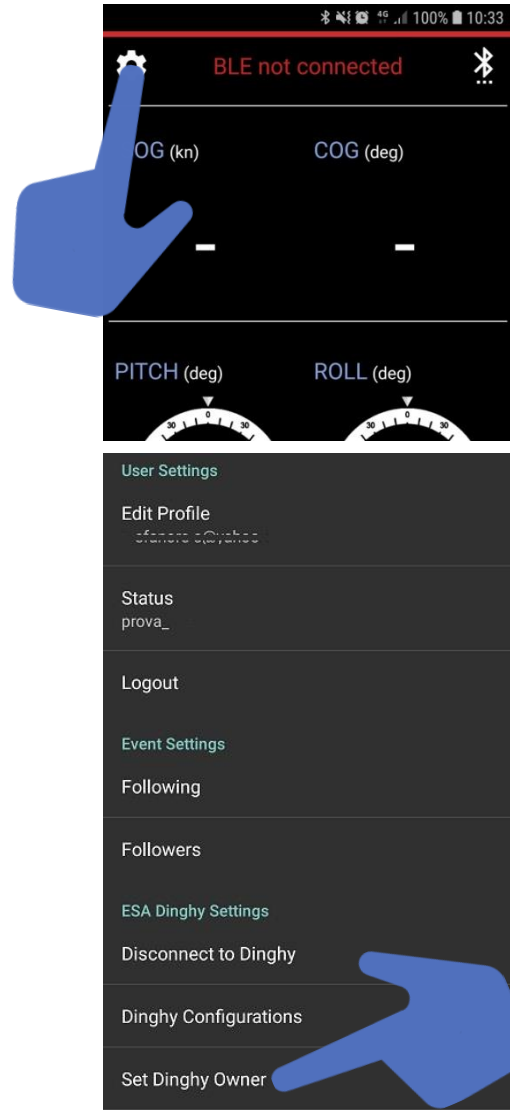
The screen will display all the Dinghies within range of the Bluetooth wireless connection. Select the Dinghy of your interest from the list displayed (only one can be selected at a time).

In the case of a first association, a message will appear indicating "unauthorized user", as the owner has not yet been assigned to the Dinghy in question.

Follow the instructions in the message that appears on the screen, described in the following pages of this manual.

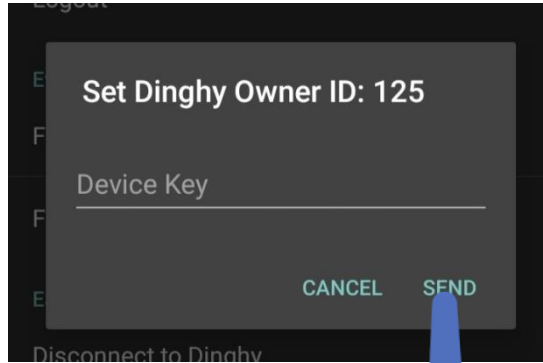


Smartphone Association – ESA Dinghy



Enter the settings (gear icon at the top left),
click on the item '*Set dinghy owner*'.

Smartphone Association – ESA Dinghy



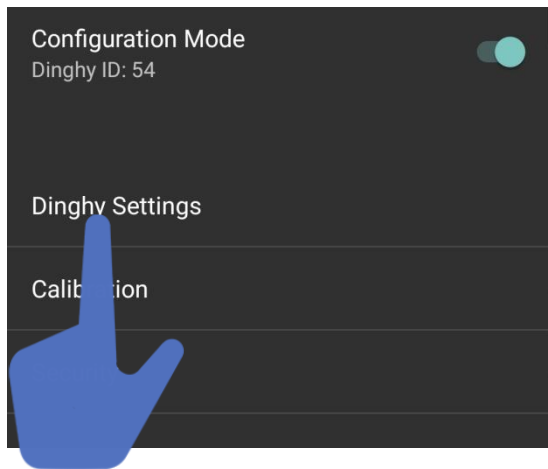
In the window that appears on the screen, enter the 8 alphanumeric character Device Key present on the card inside the package.

Once the 8-digit alphanumeric code has been entered, press the 'SEND' button.

2. SET APN SIM

In order to use ESA DINGHY in data transmission, it is necessary to have inserted a SIM card with the data connection active.

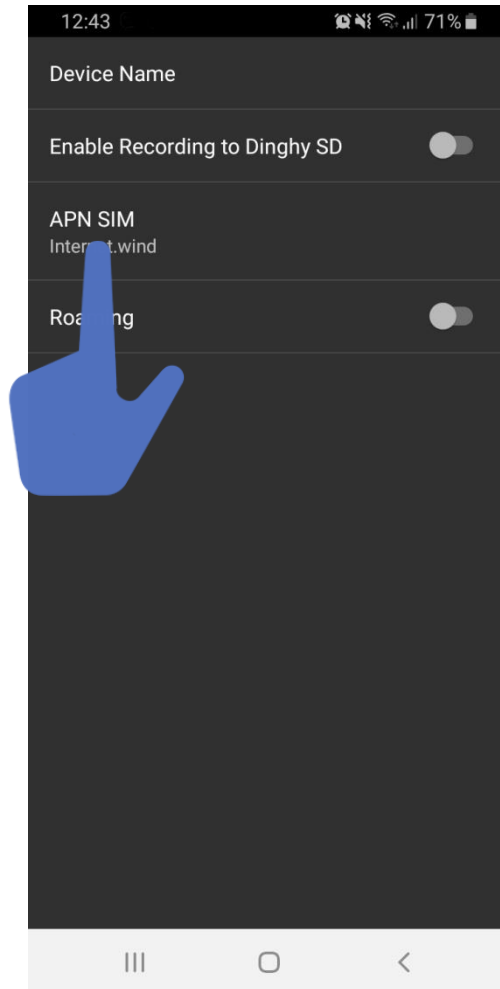
It is also necessary to manually enter the correct APN value in the "APN SIM" menu. The APN is a code requested by the telephone company of the SIM card, to allow connection to the data network. The text to be entered is easily available online or by requesting it to the operator of the telephone company concerned



In the main menu select **Dinghy Configuration**, then **Dinghy Settings**

2. SET APN SIM

Dinghy Settings



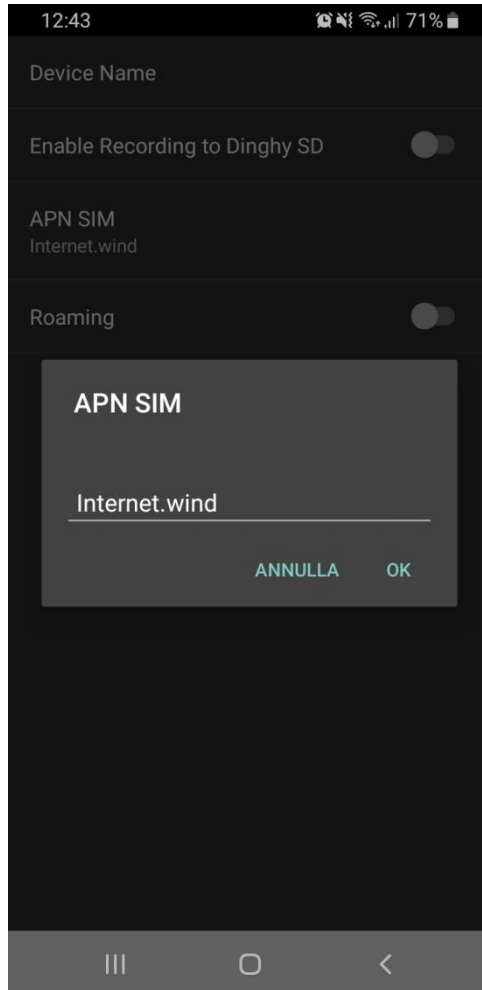
Within the 'Dinghy Configurations' menu there is the 'Dinghy Settings' menu, where 3 different settings can be made :

- Enable Recording to Dinghy SD
- APN SIM
- Roaming

Select **APN SIM**

2. SET APN SIM

APN SIM



Below are the APN values of some major Italian telephone companies.

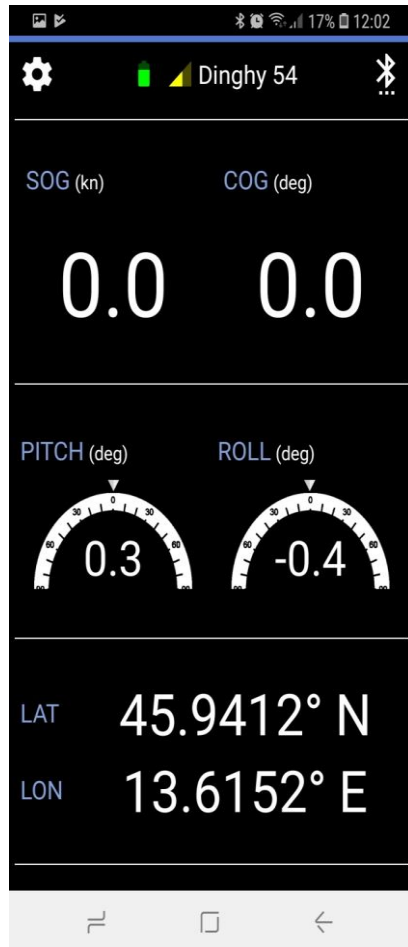
3: tre.it

TIM: ibox.tim.it

Vodafone: mobile.vodafone.it

Wind: internet.wind

The APN list above is indicative and shows updated data up to the year 2019.



At this point, smartphone and Dinghy are correctly associated and ready for use: the main screen shows the visible data.

If the GPS position is not displayed, make sure that you are not inside houses and that you do not have an overcast sky, and wait a few minutes.

ASTRA YACHT